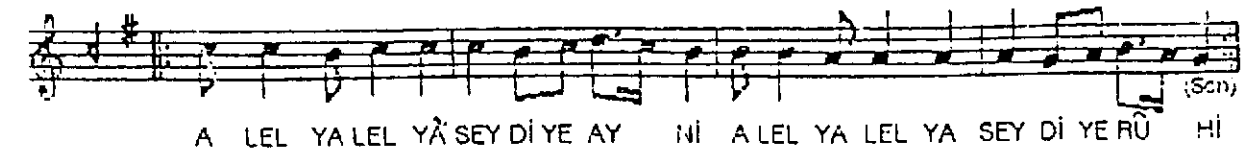
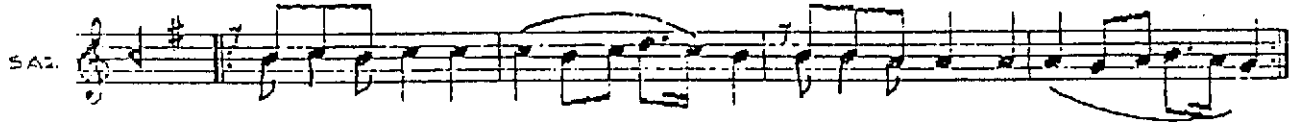


RAST ŞU'ÛL
(Muallâ gavs-i sūbhânî)

BESTE : Zekâi Dede Ef.
GÜFTE : Bahâeddin Ef.

Düyek. ♩=116



NEY ve KASİDE



MUALLÂ GAVS-İ SÜBHÂNÎ
MUKADDES KUTB-İ RABBÂNÎ
EMİRİ SİRR-İ YEZDÂNÎ
TÛ MUHYİDDİN-İ GEYLÂNÎ

ZEH-İ SİMÂ-İ NÛRÂNÎ
ZEH-İ FİDE PÎŞÂNÎ
KEMÂ-İ İNSÂNÎ
TÛ MÎ-İN-İ GEYLÂNÎ